

RESIDENCE CHARLES

Rangwee – Rue d'Ivoix – Route de Thionville - Bâtiment A

Luxembourg









Vue Rangewee



Vue Route de Thionville

Bâtiment A

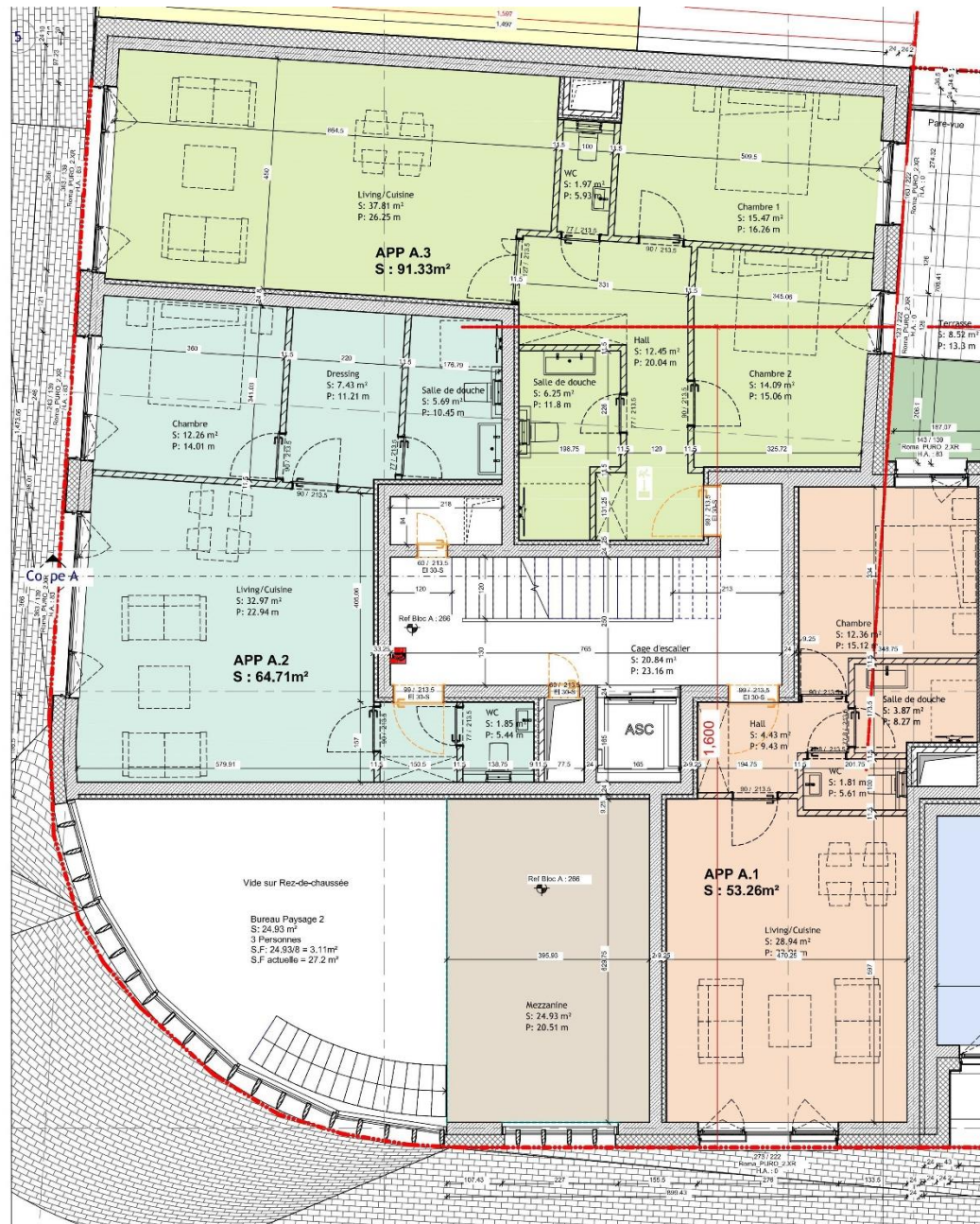
RDC



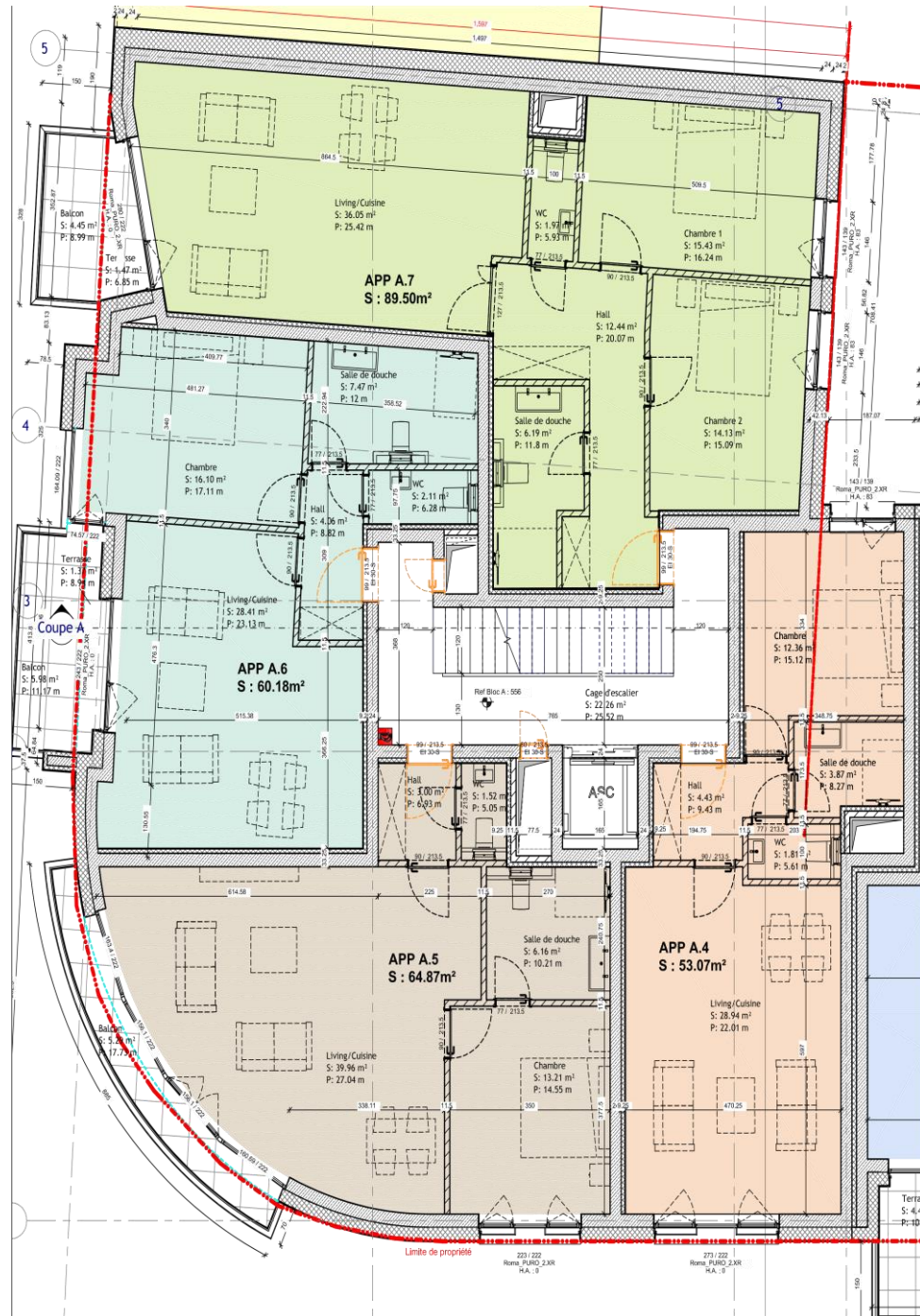
Entrée Rue d'Ivoix

aucune modification du trottoir et des NIVEAUX de la limite de propriété

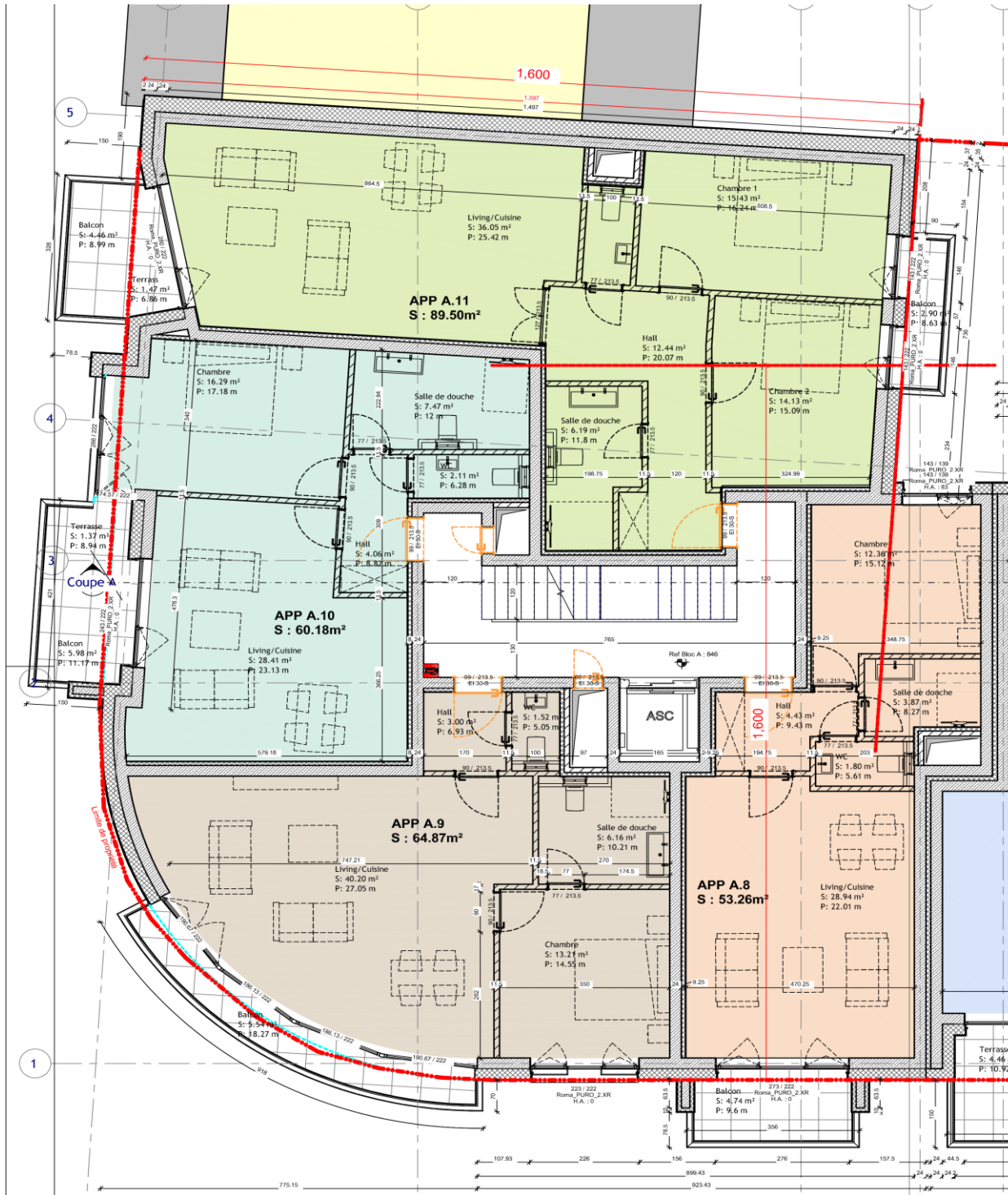
ETAGE 1



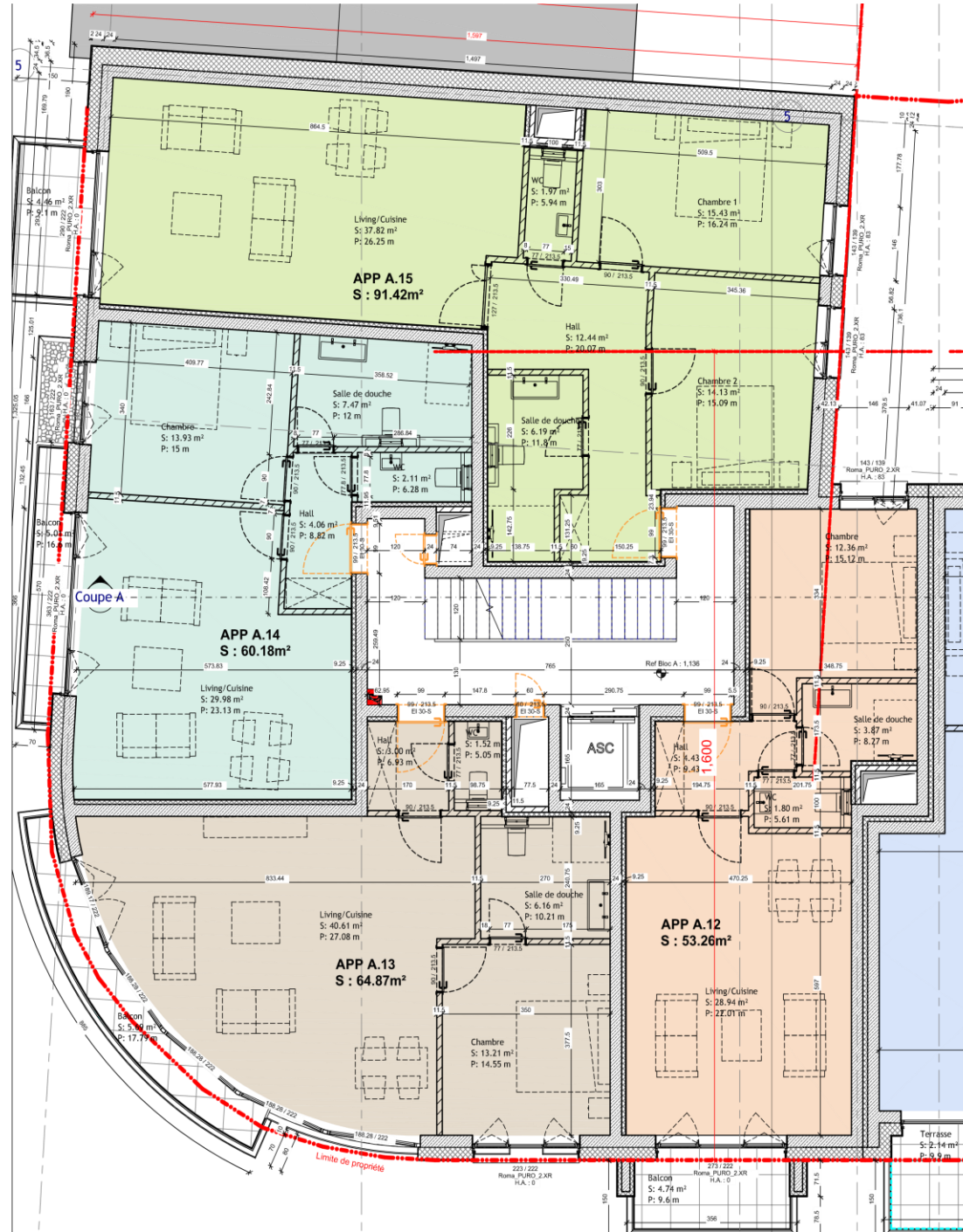
Etage 2



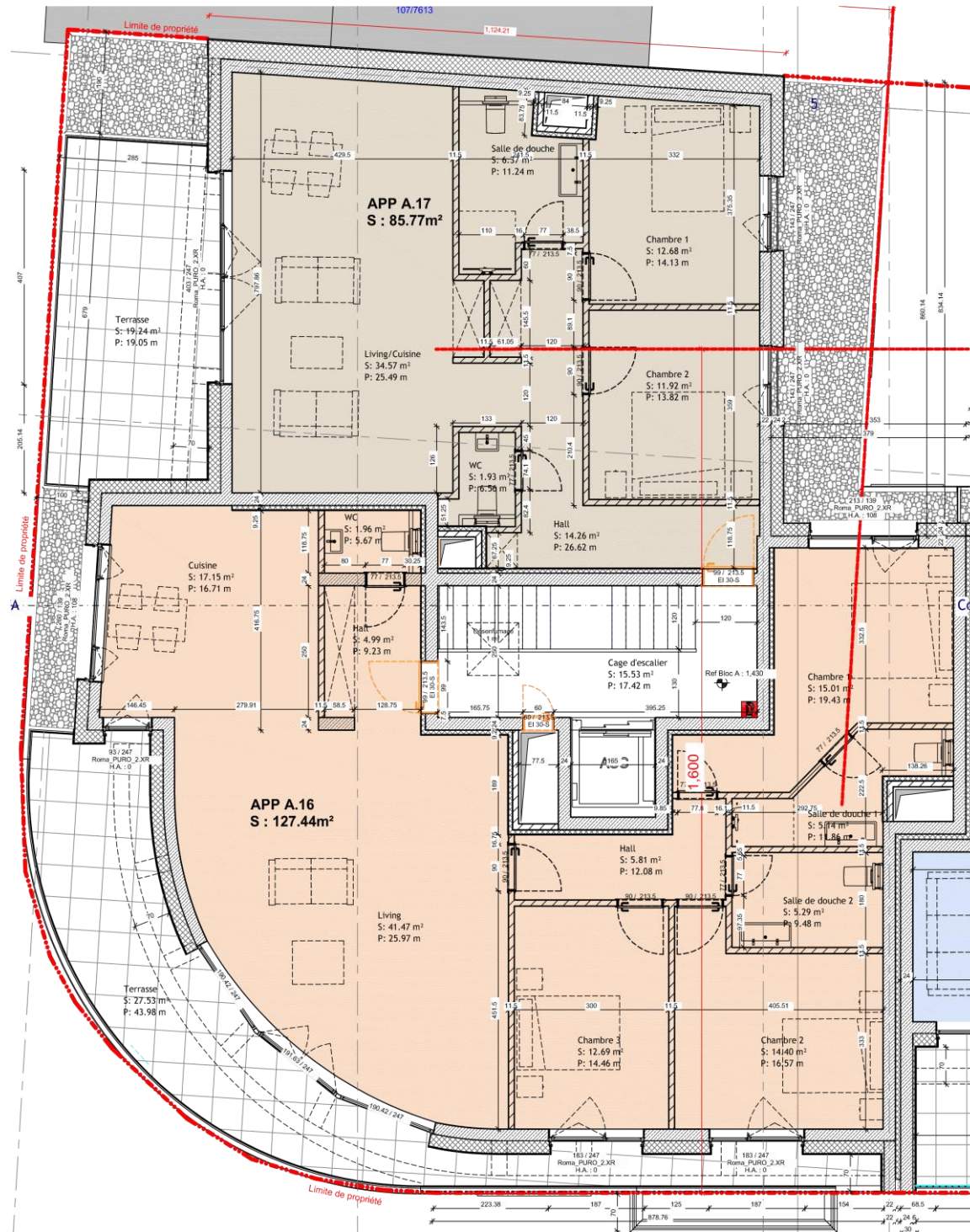
Etage 3



Etage 4

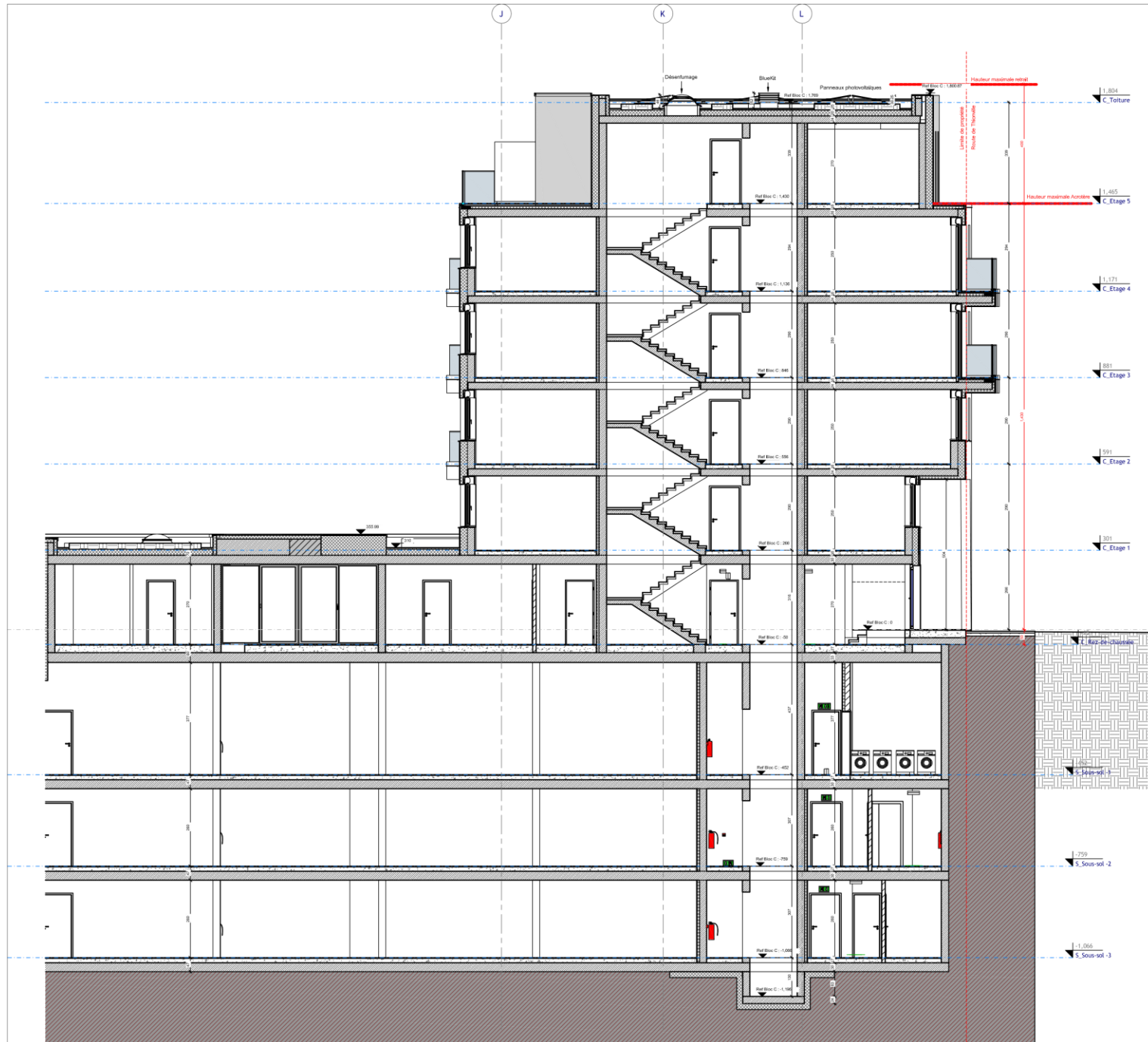


RETRAIT

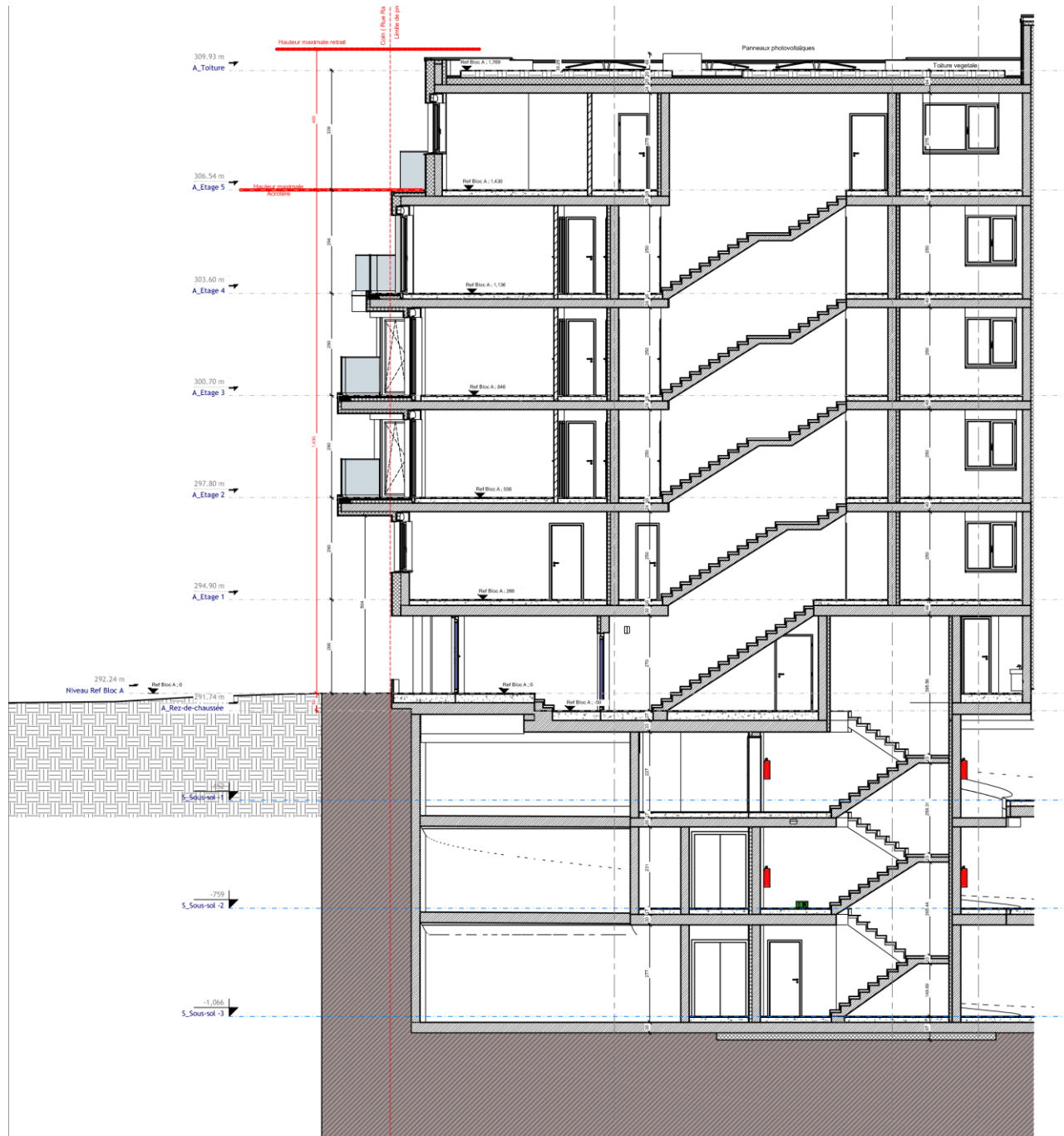


Surface Bloc A Etage +4 = 355.62 m²
Surface autorisée Retrait Bloc A 80% = 284.49 m²

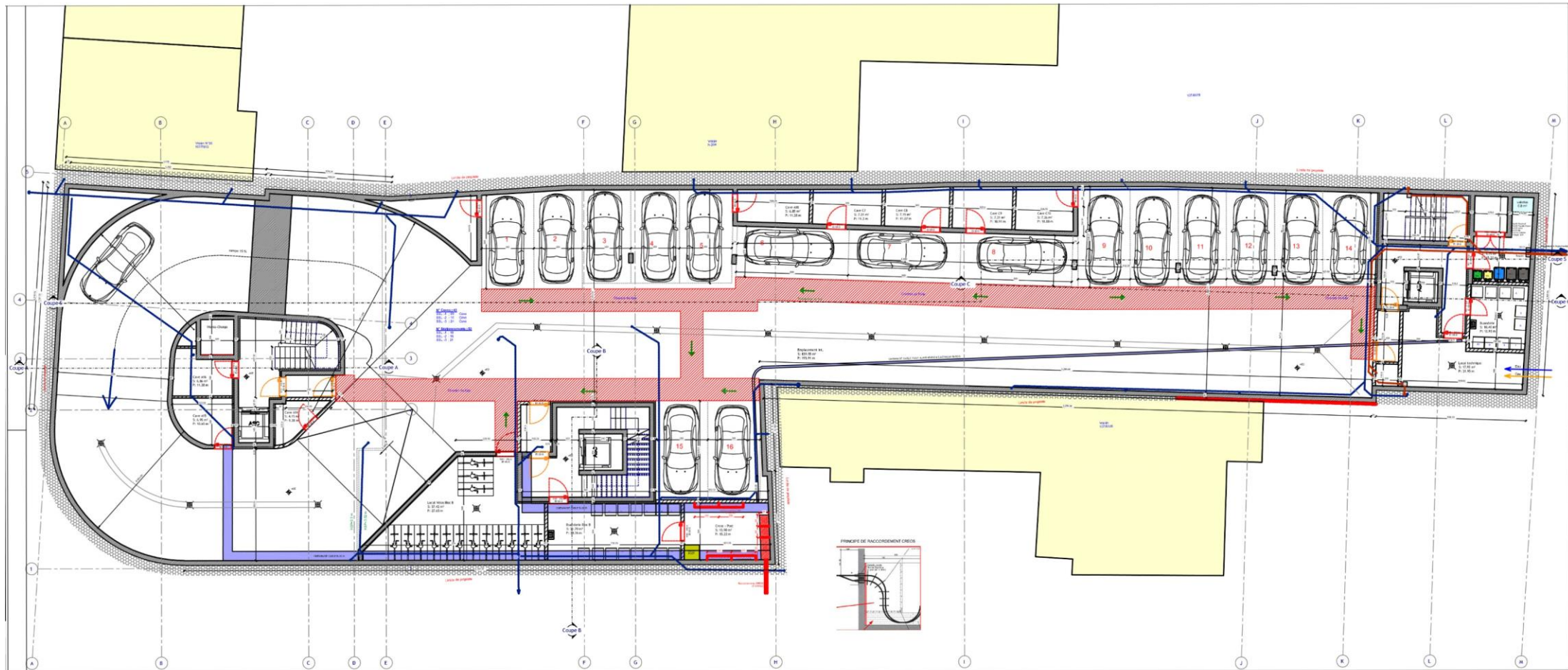
Coupe A



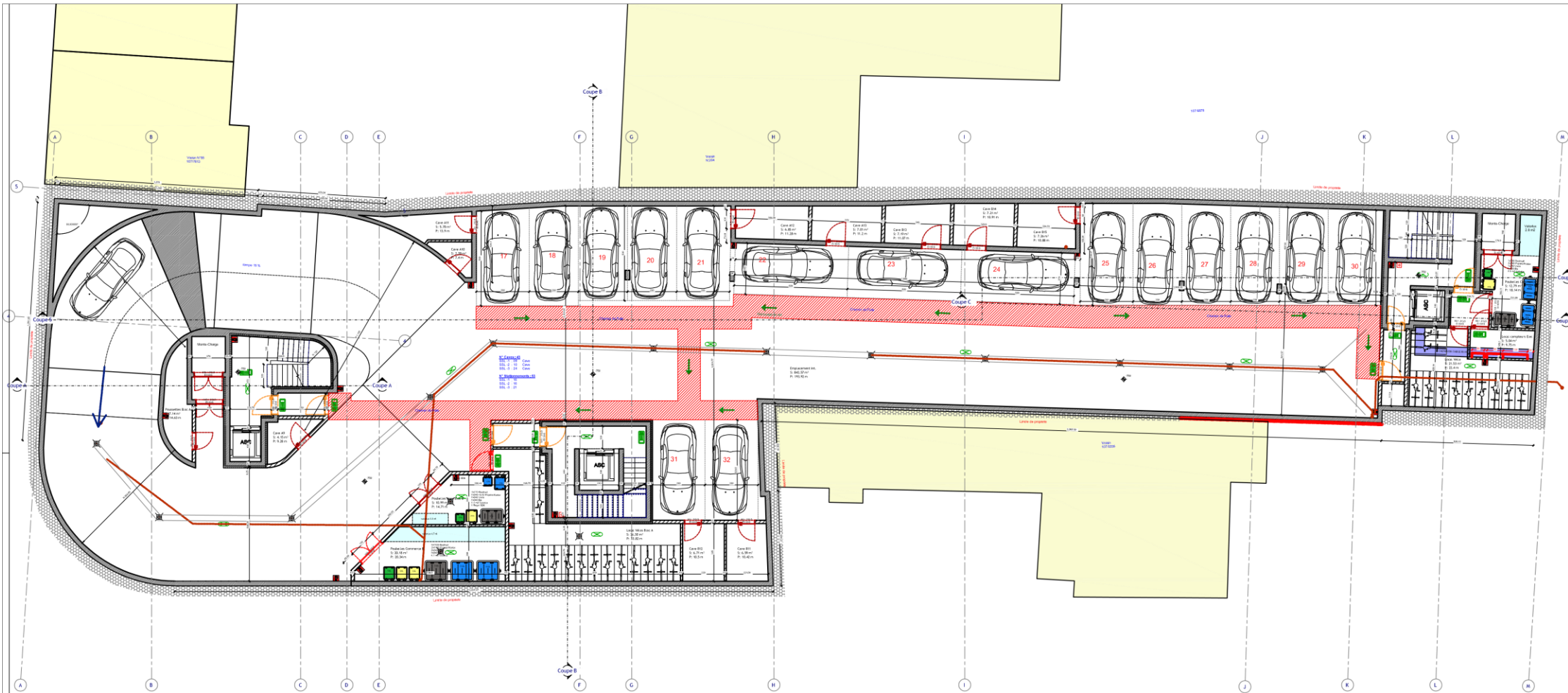
Coupe B



Sous-sol -1



Sous-sol -2



Sous-sol -3

